

## 2.13 Pipe Fitting Part 1

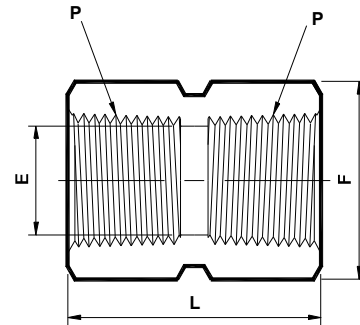
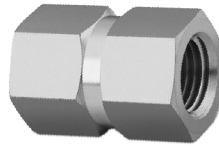
1/16"-2" NPT, 1/8"-1/2" BSP/ISO, SAE/MS

### 05. Hex Coupling

Material - **SS 304 | SS 316**

NPT (F) x NPT (F)

(N - PHC)



Sr. No.	NPT ② Female Pipe Size P	Ref. Part No.		L	ØE ①	Hex F
		SS 304	SS 316			
		NPHC4	NPHC6	Dimensions in Inches		
1	1/8 x 27	2NPHCx4	2NPHCx6	0.81	0.34	9/16
2	1/4 x 18	4NPHCx4	4NPHCx6	1.19	0.45	3/4
3	3/8 x 18	6NPHCx4	6NPHCx6	1.31	0.59	7/8
4	1/2 x 14	8NPHCx4	8NPHCx6	1.56	0.73	1.1/16
5	3/4 x 14	12NPHCx4	12NPHCx6	1.62	0.94	1.1/4
6	1 x 11.5	16NPHCx4	16NPHCx6	2.00	1.17	1.5/8

NOTE : ① The 'E' Dimension is the minimum opening.

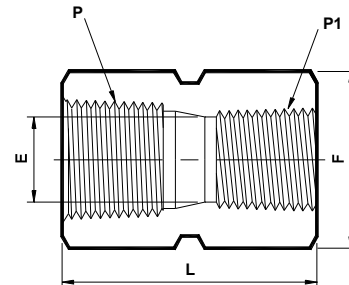
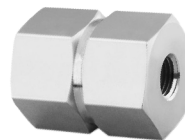
② NPT thread as per ANSI B 1.20.1.

### 06. Hex Reducing Coupling

Material - **SS 304 | SS 316**

NPT (F) x NPT (F)

(N - PHRC - N)



Sr. No.	NPT ② Female Pipe Size P	NPT ② Female Pipe Size P1	Ref. Part No.		L	ØE ①	Hex F
			SS 304	SS 316			
			PHRC4	PHRC6	Dimensions in Inches		
1	(3/8 x 18) x (1/4 x 18)		6PHRC4Nx4	6PHRC4Nx6	1.38	0.45	7/8
2	(1/2 x 14) x (1/8 x 27)		8PHRC2Nx4	8PHRC2Nx6	1.56	0.34	9/16
3	(1/2 x 14) x (1/4 x 18)		8PHRC4Nx4	8PHRC4Nx6	1.75	0.45	1.1/16
4	(1/2 x 14) x (3/8 x 18)		8PHRC6Nx4	8PHRC6Nx6	1.78	0.59	1.1/16
5	(3/4 x 14) x (1/2 x 14)		12PHRC8Nx4	12PHRC8Nx6	2.06	0.73	1.1/4
6	(1 x 11.5) x (1/2 x 14)		16PHRC8Nx4	16PHRC8Nx6	2.19	0.73	1.5/8
7	(1 x 11.5) x (3/4 x 14)		16PHRC12Nx4	16PHRC12Nx6	2.25	0.94	1.5/8

NOTE : ① The 'E' Dimension is the minimum opening.

② NPT thread as per ANSI B 1.20.1.